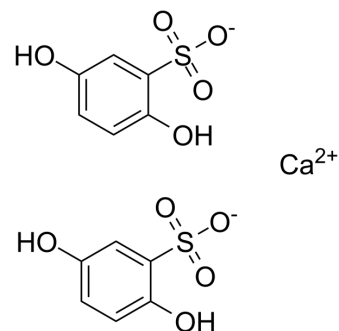


Calcium dobesilate

Cat. No.:	HY-111603
CAS No.:	20123-80-2
Molecular Formula:	C ₁₂ H ₁₀ CaO ₁₀ S ₂
Molecular Weight:	418.41
Target:	Apoptosis
Pathway:	Apoptosis
Storage:	4°C, sealed storage, away from moisture * In solvent : -80°C, 6 months; -20°C, 1 month (sealed storage, away from moisture)



SOLVENT & SOLUBILITY

In Vitro

DMSO : 150 mg/mL (358.50 mM; Need ultrasonic)
 H₂O : ≥ 100 mg/mL (239.00 mM)
 * "≥" means soluble, but saturation unknown.

Preparing Stock Solutions	Solvent Concentration	Mass	1 mg	5 mg	10 mg
	1 mM		2.3900 mL	11.9500 mL	23.9000 mL
	5 mM		0.4780 mL	2.3900 mL	4.7800 mL
	10 mM		0.2390 mL	1.1950 mL	2.3900 mL

Please refer to the solubility information to select the appropriate solvent.

In Vivo

- Add each solvent one by one: 10% DMSO >> 40% PEG300 >> 5% Tween-80 >> 45% saline
Solubility: ≥ 2.5 mg/mL (5.98 mM); Clear solution
- Add each solvent one by one: 10% DMSO >> 90% (20% SBE-β-CD in saline)
Solubility: ≥ 2.5 mg/mL (5.98 mM); Clear solution
- Add each solvent one by one: 10% DMSO >> 90% corn oil
Solubility: ≥ 2.5 mg/mL (5.98 mM); Clear solution

BIOLOGICAL ACTIVITY

Description

Calcium dobesilate, a vasoprotective, is widely used in chronic venous disease, diabetic retinopathy and the symptoms of haemorrhoidal attack in many countries.

REFERENCES

Caution: Product has not been fully validated for medical applications. For research use only.

Tel: 609-228-6898

Fax: 609-228-5909

E-mail: tech@MedChemExpress.com

Address: 1 Deer Park Dr, Suite Q, Monmouth Junction, NJ 08852, USA