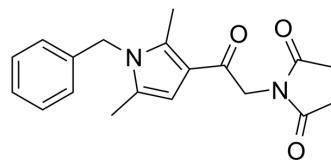


## CYM-5482

Cat. No.:	HY-111292
CAS No.:	852230-33-2
Molecular Formula:	C <sub>19</sub> H <sub>20</sub> N <sub>2</sub> O <sub>3</sub>
Molecular Weight:	324.37
Target:	LPL Receptor
Pathway:	GPCR/G Protein
Storage:	Please store the product under the recommended conditions in the Certificate of Analysis.



## BIOLOGICAL ACTIVITY

### Description

CYM-5482 is a potent and selective agonist Sphingosine 1-phosphate receptor 2 (S1PR2) with an IC<sub>50</sub> and EC<sub>50</sub> of 1.0 and 1.03 μM. CYM-5482 has the potential for the research of cancer diseases<sup>[1]</sup>.

## REFERENCES

[1]. Satsu H, et al. A sphingosine 1-phosphate receptor 2 selective allosteric agonist. *Bioorg Med Chem.* 2013;21(17):5373-5382.

**Caution: Product has not been fully validated for medical applications. For research use only.**

Tel: 609-228-6898

Fax: 609-228-5909

E-mail: tech@MedChemExpress.com

Address: 1 Deer Park Dr, Suite Q, Monmouth Junction, NJ 08852, USA