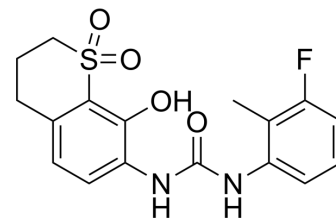


## CXCR2 antagonist 2

<b>Cat. No.:</b>	HY-139873
<b>CAS No.:</b>	2647464-91-1
<b>Molecular Formula:</b>	C <sub>17</sub> H <sub>17</sub> FN <sub>2</sub> O <sub>4</sub> S
<b>Molecular Weight:</b>	364.39
<b>Target:</b>	CXCR2
<b>Pathway:</b>	GPCR/G Protein; Immunology/Inflammation
<b>Storage:</b>	4°C, sealed storage, away from moisture and light * In solvent : -80°C, 6 months; -20°C, 1 month (sealed storage, away from moisture and light)



### SOLVENT & SOLUBILITY

<b>In Vitro</b>	DMSO : 100 mg/mL (274.43 mM; Need ultrasonic)																			
<b>Preparing Stock Solutions</b>	<table border="1"> <thead> <tr> <th rowspan="2">Solvent Concentration</th> <th colspan="3">Mass</th> </tr> <tr> <th>1 mg</th> <th>5 mg</th> <th>10 mg</th> </tr> </thead> <tbody> <tr> <td>1 mM</td> <td>2.7443 mL</td> <td>13.7216 mL</td> <td>27.4431 mL</td> </tr> <tr> <td>5 mM</td> <td>0.5489 mL</td> <td>2.7443 mL</td> <td>5.4886 mL</td> </tr> <tr> <td>10 mM</td> <td>0.2744 mL</td> <td>1.3722 mL</td> <td>2.7443 mL</td> </tr> </tbody> </table>	Solvent Concentration	Mass			1 mg	5 mg	10 mg	1 mM	2.7443 mL	13.7216 mL	27.4431 mL	5 mM	0.5489 mL	2.7443 mL	5.4886 mL	10 mM	0.2744 mL	1.3722 mL	2.7443 mL
	Solvent Concentration		Mass																	
		1 mg	5 mg	10 mg																
	1 mM	2.7443 mL	13.7216 mL	27.4431 mL																
5 mM	0.5489 mL	2.7443 mL	5.4886 mL																	
10 mM	0.2744 mL	1.3722 mL	2.7443 mL																	
Please refer to the solubility information to select the appropriate solvent.																				
<b>In Vivo</b>	1. Add each solvent one by one: 10% DMSO >> 90% corn oil Solubility: ≥ 2.5 mg/mL (6.86 mM); Clear solution																			

### BIOLOGICAL ACTIVITY

<b>Description</b>	CXCR2 antagonist 2 is a potent CXCR2 antagonist for cancer immunoresearch with an IC <sub>50</sub> value of 95 nM.
--------------------	--

### REFERENCES

[1]. Dong Y, et al. Discovery of Benzocyclic Sulfone Derivatives as Potent CXCR2 Antagonists for Cancer Immunotherapy. J Med Chem. 2021 Nov 25;64(22):16626-16640.

---

**Caution: Product has not been fully validated for medical applications. For research use only.**

Tel: 609-228-6898

Fax: 609-228-5909

E-mail: [tech@MedChemExpress.com](mailto:tech@MedChemExpress.com)

Address: 1 Deer Park Dr, Suite Q, Monmouth Junction, NJ 08852, USA