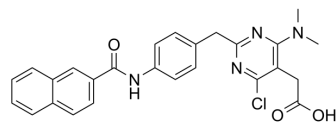


CRTh2 antagonist 2

Cat. No.:	HY-125970	
CAS No.:	780763-95-3	
Molecular Formula:	C ₂₆ H ₂₃ ClN ₄ O ₃	
Molecular Weight:	474.94	
Target:	Prostaglandin Receptor	
Pathway:	GPCR/G Protein	
Storage:	Powder	-20°C 3 years
	In solvent	-80°C 6 months
		-20°C 1 month



SOLVENT & SOLUBILITY

In Vitro

DMSO : 125 mg/mL (263.19 mM; Need ultrasonic)

Concentration	Mass		
	1 mg	5 mg	10 mg
1 mM	2.1055 mL	10.5276 mL	21.0553 mL
5 mM	0.4211 mL	2.1055 mL	4.2111 mL
10 mM	0.2106 mL	1.0528 mL	2.1055 mL

Please refer to the solubility information to select the appropriate solvent.

BIOLOGICAL ACTIVITY

Description

CRTh2 antagonist 2 is selective and potent CRTH2 antagonist extracted from patent US20140148470A1, compound Example 1, has an IC₅₀ of ≤10 nM. CRTh2 antagonist 2 can be used in research of androgenic alopecia^[1].

IC₅₀ & Target

IC₅₀: ≤10 nM (CRTh2)^[1]

In Vitro

CRTH2 (chemoattractant receptor-homologous molecule expressed on Th2 cells) protein, also known as GPR44, is a G-protein coupled receptor (GPCR) which is amongst other ligands most strongly activated by prostaglandin D2 (PGD2). PGD2 is a product of prostaglandin D2 synthase (PTGDS)^[1].

MCE has not independently confirmed the accuracy of these methods. They are for reference only.

REFERENCES

[1]. Andreas Schnapp, et al. Pyrimidine compounds for treating hairloss. US20140148470A1.

Caution: Product has not been fully validated for medical applications. For research use only.

Tel: 609-228-6898

Fax: 609-228-5909

E-mail: tech@MedChemExpress.com

Address: 1 Deer Park Dr, Suite Q, Monmouth Junction, NJ 08852, USA