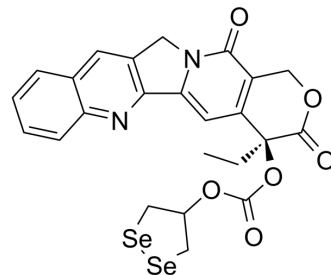


## CPT-Se3

Cat. No.:	HY-145290
CAS No.:	2968315-02-6
Molecular Formula:	C <sub>24</sub> H <sub>20</sub> N <sub>2</sub> O <sub>6</sub> Se <sub>2</sub>
Molecular Weight:	590.35
Target:	Topoisomerase; Apoptosis
Pathway:	Cell Cycle/DNA Damage; Apoptosis
Storage:	Please store the product under the recommended conditions in the Certificate of Analysis.



## BIOLOGICAL ACTIVITY

### Description

CPT-Se3, a selenoproagent of Camptothecin (CPT), shows improved potency in killing cancer cells and inhibiting tumor growth. CPT-Se3 decreases the GSH/GSSG ratio and total thiols, elevates the ROS level in Hep G2 cells, and eventually induces apoptosis of cancer cells. CPT-Se3 shows cytotoxicity against HeLa, Hep G2, A549, and SMMC-7721 cells (IC<sub>50</sub>= 2.19-4.7 μM)<sup>[1]</sup>.

## REFERENCES

[1]. Zhao J, et al. Integration of a Diselenide Unit Generates Fluorogenic Camptothecin Prodrugs with Improved Cytotoxicity to Cancer Cells. *J Med Chem.* 2021;64(24):17979-17991.

**Caution: Product has not been fully validated for medical applications. For research use only.**

Tel: 609-228-6898

Fax: 609-228-5909

E-mail: tech@MedChemExpress.com

Address: 1 Deer Park Dr, Suite Q, Monmouth Junction, NJ 08852, USA