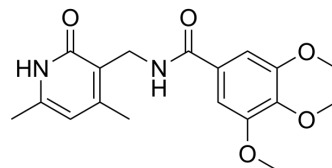


CPI-905

Cat. No.:	HY-111085
CAS No.:	931078-17-0
Molecular Formula:	C ₁₈ H ₂₀ N ₂ O ₅
Molecular Weight:	344.36
Target:	Histone Methyltransferase
Pathway:	Epigenetics
Storage:	Please store the product under the recommended conditions in the Certificate of Analysis.



BIOLOGICAL ACTIVITY

Description	CPI-905 is a potent, selective, and cell-active EZH2 inhibitor ^[1] .
-------------	---

REFERENCES

[1]. William D Bradley, et al. EZH2 inhibitor efficacy in non-Hodgkin's lymphoma does not require suppression of H3K27 monomethylation. Chem Biol. 2014 Nov 20;21(11):1463-75.

Caution: Product has not been fully validated for medical applications. For research use only.

Tel: 609-228-6898

Fax: 609-228-5909

E-mail: tech@MedChemExpress.com

Address: 1 Deer Park Dr, Suite Q, Monmouth Junction, NJ 08852, USA