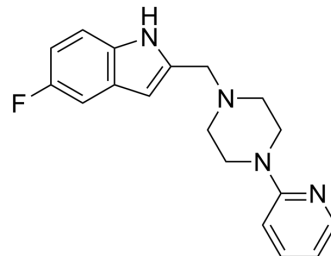


CP 226269

Cat. No.:	HY-116082
CAS No.:	220941-93-5
Molecular Formula:	C ₁₈ H ₁₉ FN ₄
Molecular Weight:	310.37
Target:	Dopamine Receptor
Pathway:	GPCR/G Protein; Neuronal Signaling
Storage:	Please store the product under the recommended conditions in the Certificate of Analysis.



BIOLOGICAL ACTIVITY

Description

CP 226269 is a potent dopamine D4 receptor agonist that induces calcium flux with EC₅₀ of 32.0 nM. CP 226269 can be used in the research of schizophrenia and other related diseases^[1].

REFERENCES

[1]. Robert B Moreland, et al. Comparative pharmacology of human dopamine D(2)-like receptor stable cell lines coupled to calcium flux through Galpha(qo5). *Biochem Pharmacol.* 2004 Aug 15;68(4):761-72.

Caution: Product has not been fully validated for medical applications. For research use only.

Tel: 609-228-6898

Fax: 609-228-5909

E-mail: tech@MedChemExpress.com

Address: 1 Deer Park Dr, Suite Q, Monmouth Junction, NJ 08852, USA