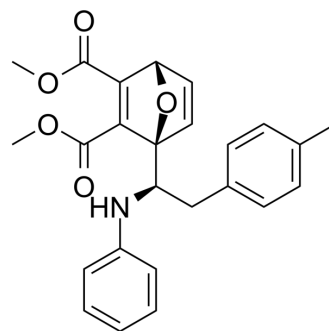


COH000

Cat. No.:	HY-114304		
CAS No.:	1534358-79-6		
Molecular Formula:	C ₂₅ H ₂₅ NO ₅		
Molecular Weight:	419.47		
Target:	E1/E2/E3 Enzyme		
Pathway:	Metabolic Enzyme/Protease		
Storage:	Powder	-20°C	3 years
		4°C	2 years
	In solvent	-80°C	2 years
		-20°C	1 year



SOLVENT & SOLUBILITY

In Vitro

DMSO : 35.71 mg/mL (85.13 mM; Need ultrasonic)

Concentration	Solvent	Mass		
		1 mg	5 mg	10 mg
Preparing Stock Solutions	1 mM	2.3840 mL	11.9198 mL	23.8396 mL
	5 mM	0.4768 mL	2.3840 mL	4.7679 mL
	10 mM	0.2384 mL	1.1920 mL	2.3840 mL

Please refer to the solubility information to select the appropriate solvent.

BIOLOGICAL ACTIVITY

Description	COH000 is an allosteric, covalent and irreversible inhibitor of ubiquitin-like 1-activating enzyme (SUMO-activating enzyme) (E1), with an IC ₅₀ of 0.2 μM for SUMOylation in vitro ^[1] .
IC₅₀ & Target	IC ₅₀ : 0.2 μM (SUMO-activating enzyme) ^[1] .
In Vitro	COH000 has over 500-fold selectivity for SUMOylation than ubiquitylation. COH000 inhibits SUMO adenylation without directly competing with ATP or SUMO1 binding. COH000 has an extremely slow off-rate and is consistent with it being covalently bound to the enzyme ^[1] . MCE has not independently confirmed the accuracy of these methods. They are for reference only.

REFERENCES

[1]. Li YJ, et al. Allosteric Inhibition of Ubiquitin-like Modifications by a Class of Inhibitor of SUMO-Activating Enzyme. Cell Chem Biol. 2018 Dec 5. pii: S2451-9456(18)30386-6.

Caution: Product has not been fully validated for medical applications. For research use only.

Tel: 609-228-6898

Fax: 609-228-5909

E-mail: tech@MedChemExpress.com

Address: 1 Deer Park Dr, Suite Q, Monmouth Junction, NJ 08852, USA