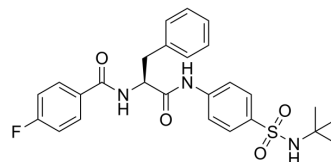


## CMPD-39

Cat. No.:	HY-141659		
CAS No.:	2242582-40-5		
Molecular Formula:	C <sub>26</sub> H <sub>28</sub> FN <sub>3</sub> O <sub>4</sub> S		
Molecular Weight:	497.58		
Target:	Deubiquitinase		
Pathway:	Cell Cycle/DNA Damage		
Storage:	Powder	-20°C	3 years
		4°C	2 years
	In solvent	-80°C	6 months
		-20°C	1 month



### SOLVENT & SOLUBILITY

In Vitro	DMSO : 100 mg/mL (200.97 mM; Need ultrasonic)				
		Solvent Concentration	Mass 1 mg	5 mg	10 mg
	Preparing Stock Solutions	1 mM	2.0097 mL	10.0486 mL	20.0973 mL
		5 mM	0.4019 mL	2.0097 mL	4.0195 mL
10 mM		0.2010 mL	1.0049 mL	2.0097 mL	
Please refer to the solubility information to select the appropriate solvent.					
In Vivo	1. Add each solvent one by one: 10% DMSO >> 90% corn oil Solubility: ≥ 2.5 mg/mL (5.02 mM); Clear solution				

### BIOLOGICAL ACTIVITY

Description	CMPD-39 is a selective USP30 inhibitor with an IC <sub>50</sub> of 0.02 μM. CMPD-39 increases protein ubiquitination and accelerates mitophagy <sup>[1]</sup> .
IC <sub>50</sub> & Target	USP30 0.02 μM (IC <sub>50</sub> )

### CUSTOMER VALIDATION

- Cell Rep. 2023 Oct 17;42(10):113260.

---

See more customer validations on [www.MedChemExpress.com](http://www.MedChemExpress.com)

## REFERENCES

---

[1]. Rusilowicz-Jones EV, Barone FG, Lopes FM, et al. Benchmarking a highly selective USP30 inhibitor for enhancement of mitophagy and pexophagy. *Life Sci Alliance*. 2021;5(2):e202101287.

[2]. Arthur F Kluge, et al. Novel highly selective inhibitors of ubiquitin specific protease 30 (USP30) accelerate mitophagy. *Bioorg Med Chem Lett*. 2018 Aug 15;28(15):2655-2659.

---

**Caution: Product has not been fully validated for medical applications. For research use only.**

Tel: 609-228-6898

Fax: 609-228-5909

E-mail: [tech@MedChemExpress.com](mailto:tech@MedChemExpress.com)

Address: 1 Deer Park Dr, Suite Q, Monmouth Junction, NJ 08852, USA