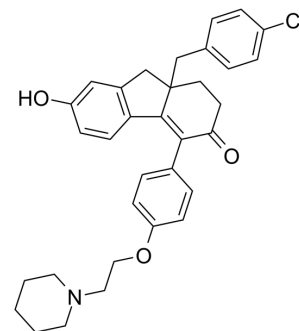


CMP8

Cat. No.:	HY-110392
CAS No.:	851107-28-3
Molecular Formula:	C ₃₃ H ₃₄ ClNO ₃
Molecular Weight:	528.08
Target:	Estrogen Receptor/ERR
Pathway:	Others
Storage:	Please store the product under the recommended conditions in the Certificate of Analysis.



BIOLOGICAL ACTIVITY

Description	CMP8, a selective ligand for estrogen receptor, binds to the mutant estrogen receptor ligand binding domain (ERLBD). CMP8 exhibits IC ₅₀ values of 29 nM, 41 nM, 1100 nM and 2200 nM for MGERα, MGRERα, hERα and hERβ, respectively ^{[1][2]} .			
IC₅₀ & Target	MGERα 29 nM (IC ₅₀)	MGRERα 41 nM (IC ₅₀)	hERα 1100 nM (IC ₅₀)	hERβ 2200 nM (IC ₅₀)
In Vivo	CMP8 (Compound 20h) is dosed in male Balb-c mice (4 mg/kg, ip). The plasma concentration after 4 h is 1.5-fold its EC ₅₀ in mammalian cells with a C _{max} of 0.5 μM after 30 min ^{[1][2]} . MCE has not independently confirmed the accuracy of these methods. They are for reference only.			

REFERENCES

[1]. Miyazaki Y, et al. Destabilizing domains derived from the human estrogen receptor. *J Am Chem Soc.* 2012 Mar 7;134(9):3942-5.

[2]. Kinzel O, et al. A structure-guided approach to an orthogonal estrogen-receptor-based gene switch activated by ligands suitable for in vivo studies. *J Med Chem.* 2006 Sep 7;49(18):5404-7.

Caution: Product has not been fully validated for medical applications. For research use only.

Tel: 609-228-6898

Fax: 609-228-5909

E-mail: tech@MedChemExpress.com

Address: 1 Deer Park Dr, Suite Q, Monmouth Junction, NJ 08852, USA