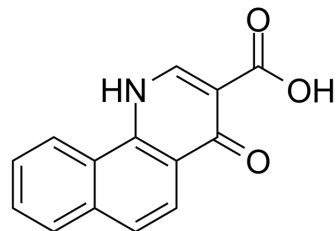


## CK2-IN-1

|                    |   |
|--------------------|---|
| Cat. No.:          | HY-121792   |
| CAS No.:           | 51726-83-1  |
| Molecular Formula: | C <sub>14</sub> H <sub>9</sub> NO <sub>3</sub>  |
| Molecular Weight:  | 239.23  |
| Target:            | Casein Kinase   |
| Pathway:           | Cell Cycle/DNA Damage; Stem Cell/Wnt  |
| Storage:           | Please store the product under the recommended conditions in the Certificate of Analysis. |



## BIOLOGICAL ACTIVITY

|             |  |
|-------------|--|
| Description | CK2-IN-1 is a CK2 inhibitor, with an IC <sub>50</sub> of 150 nM <sup>[1]</sup> . |
|-------------|--|

## REFERENCES

[1]. Sanela Martić, et al. Electrochemical screening of the indole/quinolone derivatives as potential protein kinase CK2 inhibitors. *Anal Biochem.* 2012 Feb 15;421(2):617-21.

**Caution: Product has not been fully validated for medical applications. For research use only.**

Tel: 609-228-6898

Fax: 609-228-5909

E-mail: tech@MedChemExpress.com

Address: 1 Deer Park Dr, Suite Q, Monmouth Junction, NJ 08852, USA