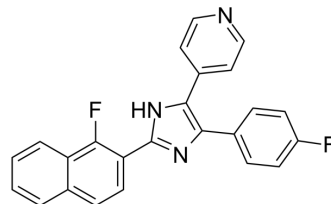


## CK1-IN-1

|                           |   |       |         |
|---------------------------|---|-------|---------|
| <b>Cat. No.:</b>          | HY-111820   |       |         |
| <b>CAS No.:</b>           | 1784751-20-7  |       |         |
| <b>Molecular Formula:</b> | C <sub>24</sub> H <sub>15</sub> F <sub>2</sub> N <sub>3</sub> |       |         |
| <b>Molecular Weight:</b>  | 383.39  |       |         |
| <b>Target:</b>            | Casein Kinase   |       |         |
| <b>Pathway:</b>           | Cell Cycle/DNA Damage; Stem Cell/Wnt                          |       |         |
| <b>Storage:</b>           | Powder  | -20°C | 3 years |
|                           |   | 4°C   | 2 years |
|                           | In solvent  | -80°C | 2 years |
|                           |   | -20°C | 1 year  |



### SOLVENT & SOLUBILITY

#### In Vitro

DMSO : 62.5 mg/mL (163.02 mM; Need ultrasonic)  
 H<sub>2</sub>O : < 0.1 mg/mL (insoluble)

| Preparing Stock Solutions | Solvent       | Mass | 1 mg      | 5 mg       | 10 mg      |
|---------------------------|---------------|------|-----------|------------|------------|
|                           | Concentration |      |           |            |            |
|                           | 1 mM          |      | 2.6083 mL | 13.0415 mL | 26.0831 mL |
|                           | 5 mM          |      | 0.5217 mL | 2.6083 mL  | 5.2166 mL  |
|                           | 10 mM         |      | 0.2608 mL | 1.3042 mL  | 2.6083 mL  |

Please refer to the solubility information to select the appropriate solvent.

### BIOLOGICAL ACTIVITY

#### Description

CK1-IN-1 is a casein kinase 1 (CK1) inhibitor extracted from patent WO2015119579A1, compound 1c, has IC<sub>50</sub>s of 15 nM, 16 nM, 73 nM for CK1δ, and CK1ε, p38σ MAPK, respectively<sup>[1]</sup>.

#### IC<sub>50</sub> & Target

CK1δ  
 15 nM (IC<sub>50</sub>)

### REFERENCES

[1]. Filip LACO, et al. 2,4,5-tri-substituted azole-based casein kinase 1 inhibitors as inducers for cardiomyogenesis. WO2015119579A1.

---

**Caution: Product has not been fully validated for medical applications. For research use only.**

Tel: 609-228-6898

Fax: 609-228-5909

E-mail: [tech@MedChemExpress.com](mailto:tech@MedChemExpress.com)

Address: 1 Deer Park Dr, Suite Q, Monmouth Junction, NJ 08852, USA