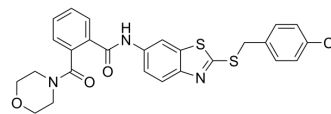


CID1231538

Cat. No.:	HY-134801
CAS No.:	354126-20-8
Molecular Formula:	C ₂₆ H ₂₂ ClN ₃ O ₃ S ₂
Molecular Weight:	524.05
Target:	GPR35
Pathway:	GPCR/G Protein
Storage:	4°C, protect from light * In solvent : -80°C, 6 months; -20°C, 1 month (protect from light)



SOLVENT & SOLUBILITY

In Vitro	DMSO : 50 mg/mL (95.41 mM; Need ultrasonic)						
	Preparing Stock Solutions	Solvent Concentration	Mass	1 mg	5 mg	10 mg	
				1 mM	1.9082 mL	9.5411 mL	19.0821 mL
				5 mM	0.3816 mL	1.9082 mL	3.8164 mL
				10 mM	0.1908 mL	0.9541 mL	1.9082 mL
Please refer to the solubility information to select the appropriate solvent.							
In Vivo	1. Add each solvent one by one: 10% DMSO >> 40% PEG300 >> 5% Tween-80 >> 45% saline Solubility: ≥ 1 mg/mL (1.91 mM); Clear solution						
	2. Add each solvent one by one: 10% DMSO >> 90% corn oil Solubility: ≥ 1 mg/mL (1.91 mM); Clear solution						

BIOLOGICAL ACTIVITY

Description	CID1231538, a benzothiazole analogue, is a potent GPR35 antagonist (IC ₅₀ =0.55 μM). GPR35 is a G protein-coupled receptor (GPCR) ^[1] .
In Vitro	GPR35 has gained special consideration as a result of its association with many diseases including type-2 diabetes, nociceptive pain, inflammation, mild mental retardation syndrome, metabolic disorders, and gastric cancer ^[1] . MCE has not independently confirmed the accuracy of these methods. They are for reference only.

REFERENCES

Caution: Product has not been fully validated for medical applications. For research use only.

Tel: 609-228-6898

Fax: 609-228-5909

E-mail: tech@MedChemExpress.com

Address: 1 Deer Park Dr, Suite Q, Monmouth Junction, NJ 08852, USA