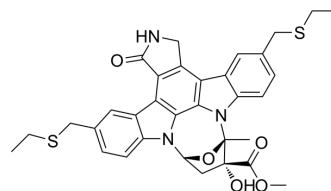


## CEP-1347

Cat. No.:	HY-10412		
CAS No.:	156177-65-0		
Molecular Formula:	C <sub>33</sub> H <sub>33</sub> N <sub>3</sub> O <sub>5</sub> S <sub>2</sub>		
Molecular Weight:	615.76		
Target:	JNK; Mixed Lineage Kinase		
Pathway:	MAPK/ERK Pathway		
Storage:	Powder	-20°C	3 years
	In solvent	-80°C	6 months
		-20°C	1 month



## BIOLOGICAL ACTIVITY

### Description

CEP-1347 is an inhibitor of the JNK/SAPK pathway with neuroprotective effects. CEP-1347 blocks JNK1 activation induced by members of the mixed lineage kinase (MLK) family (MLK3, MLK2, MLK1, dual leucine zipper kinase, and leucine zipper kinase). CEP-1347 also suppress MDM4 expression and activates wild-type p53 in retinoblastoma cells.

### IC<sub>50</sub> & Target

JNK1

## REFERENCES

- [1]. Mitobe Y, Nakagawa-Saito Y, Togashi K, et al. CEP-1347 Targets MDM4 Protein Expression to Activate p53 and Inhibit the Growth of Glioma Cells. *Anticancer Res.* 2022;42(10):4727-4733.
- [2]. Mitobe Y, Suzuki S, Nakagawa-Saito Y, et al. The Novel MDM4 Inhibitor CEP-1347 Activates the p53 Pathway and Blocks Malignant Meningioma Growth In Vitro and In Vivo. *Biomedicines.* 2023;11(7):1967.
- [3]. Maroney AC, Finn JP, Connors TJ, et al. Cep-1347 (KT7515), a semisynthetic inhibitor of the mixed lineage kinase family. *J Biol Chem.* 2001;276(27):25302-25308.
- [4]. Saporito MS, Hudkins RL, Maroney AC. Discovery of CEP-1347/KT-7515, an inhibitor of the JNK/SAPK pathway for the treatment of neurodegenerative diseases. *Prog Med Chem.* 2002;40:23-62.

**Caution: Product has not been fully validated for medical applications. For research use only.**

Tel: 609-228-6898

Fax: 609-228-5909

E-mail: tech@MedChemExpress.com

Address: 1 Deer Park Dr, Suite Q, Monmouth Junction, NJ 08852, USA