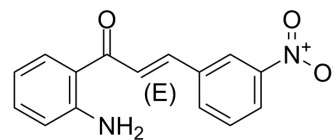


CDC25B-IN-2

Cat. No.:	HY-137175A		
CAS No.:	134271-74-2		
Molecular Formula:	C ₁₅ H ₁₂ N ₂ O ₃		
Molecular Weight:	268.27		
Target:	Phosphatase		
Pathway:	Metabolic Enzyme/Protease		
Storage:	Powder	-20°C	3 years
		4°C	2 years
	In solvent	-80°C	6 months
		-20°C	1 month



SOLVENT & SOLUBILITY

In Vitro	DMSO : 250 mg/mL (931.90 mM; Need ultrasonic)				
		Solvent Concentration	Mass 1 mg	5 mg	10 mg
	Preparing Stock Solutions	1 mM	3.7276 mL	18.6379 mL	37.2759 mL
		5 mM	0.7455 mL	3.7276 mL	7.4552 mL
10 mM		0.3728 mL	1.8638 mL	3.7276 mL	
Please refer to the solubility information to select the appropriate solvent.					
In Vivo	1. Add each solvent one by one: 10% DMSO >> 40% PEG300 >> 5% Tween-80 >> 45% saline Solubility: ≥ 2.08 mg/mL (7.75 mM); Clear solution 2. Add each solvent one by one: 10% DMSO >> 90% (20% SBE-β-CD in saline) Solubility: 2.08 mg/mL (7.75 mM); Suspended solution; Need ultrasonic				

BIOLOGICAL ACTIVITY

Description	CDC25B-IN-2 is a potent cdc25B inhibitor ^[1] .
In Vitro	CDC25B-IN-2 (compound 27; 20 μg/mL) has cdc25B enzyme inhibitory activities 16.11% in vitro ^[1] . MCE has not independently confirmed the accuracy of these methods. They are for reference only.

REFERENCES

[1]. Zhao, F., et al. Synthesis and cdc25B inhibitory activity evaluation of chalcones. Chemistry of Natural Compounds, 2013,49(2), 206-214.

Caution: Product has not been fully validated for medical applications. For research use only.

Tel: 609-228-6898

Fax: 609-228-5909

E-mail: tech@MedChemExpress.com

Address: 1 Deer Park Dr, Suite Q, Monmouth Junction, NJ 08852, USA