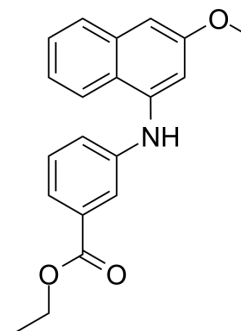


## CDC25B-IN-1

<b>Cat. No.:</b>	HY-126246
<b>CAS No.:</b>	2374831-10-2
<b>Molecular Formula:</b>	C <sub>20</sub> H <sub>19</sub> NO <sub>3</sub>
<b>Molecular Weight:</b>	321.37
<b>Target:</b>	Phosphatase
<b>Pathway:</b>	Metabolic Enzyme/Protease
<b>Storage:</b>	4°C, stored under nitrogen * In solvent : -80°C, 6 months; -20°C, 1 month (stored under nitrogen)



### SOLVENT & SOLUBILITY

<b>In Vitro</b>	DMSO : 100 mg/mL (311.17 mM; Need ultrasonic)					
	Ethanol : 50 mg/mL (155.58 mM; Need ultrasonic)					
	<b>Preparing Stock Solutions</b>	<b>Solvent</b>	<b>Mass</b>	<b>1 mg</b>	<b>5 mg</b>	<b>10 mg</b>
		<b>Concentration</b>				
		<b>1 mM</b>		3.1117 mL	15.5584 mL	31.1168 mL
<b>5 mM</b>			0.6223 mL	3.1117 mL	6.2234 mL	
	<b>10 mM</b>		0.3112 mL	1.5558 mL	3.1117 mL	
Please refer to the solubility information to select the appropriate solvent.						
<b>In Vivo</b>	1. Add each solvent one by one: 10% DMSO >> 40% PEG300 >> 5% Tween-80 >> 45% saline Solubility: ≥ 2.5 mg/mL (7.78 mM); Clear solution					
	2. Add each solvent one by one: 10% DMSO >> 90% corn oil Solubility: ≥ 2.5 mg/mL (7.78 mM); Clear solution					

### BIOLOGICAL ACTIVITY

<b>Description</b>	CDC25B-IN-1 (compound 4a) is a potent inhibitor of cell division cycle 25B (CDC25B) phosphatase, with a K <sub>i</sub> of 8.5 μM. CDC25B-IN-1 potently inhibits cell proliferation and colony formation, causes an increase of the G2/M phase <sup>[1]</sup> .
<b>IC<sub>50</sub> &amp; Target</b>	Ki: 8.5 μM (CDC25B phosphatase) <sup>[1]</sup>

### REFERENCES

[1]. Cerchia C, et al. Discovery of Novel Naphthylphenylketone and Naphthylphenylamine Derivatives as Cell Division Cycle 25B (CDC25B) Phosphatase Inhibitors: Design,

**Caution: Product has not been fully validated for medical applications. For research use only.**

Tel: 609-228-6898

Fax: 609-228-5909

E-mail: [tech@MedChemExpress.com](mailto:tech@MedChemExpress.com)

Address: 1 Deer Park Dr, Suite Q, Monmouth Junction, NJ 08852, USA