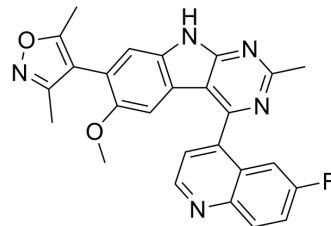


## CD235

Cat. No.:	HY-128977
CAS No.:	1627716-57-7
Molecular Formula:	C <sub>26</sub> H <sub>20</sub> FN <sub>5</sub> O <sub>2</sub>
Molecular Weight:	453.47
Target:	Epigenetic Reader Domain
Pathway:	Epigenetics
Storage:	Please store the product under the recommended conditions in the Certificate of Analysis.



## BIOLOGICAL ACTIVITY

### Description

CD235 is a structurally similar analogue of CD161. CD161 is a potent and orally bioavailable BET bromodomain inhibitor<sup>[1]</sup>.

## REFERENCES

[1]. Zhao Y, et al. Structure-Based Discovery of CF53 as a Potent and Orally Bioavailable Bromodomain and Extra-Terminal (BET) Bromodomain Inhibitor. *J Med Chem.* 2018 Jul 26;61(14):6110-6120.

**Caution: Product has not been fully validated for medical applications. For research use only.**

Tel: 609-228-6898

Fax: 609-228-5909

E-mail: tech@MedChemExpress.com

Address: 1 Deer Park Dr, Suite Q, Monmouth Junction, NJ 08852, USA