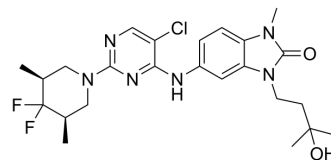


## CCT369260

Cat. No.:	HY-129188		
CAS No.:	2647503-57-7		
Molecular Formula:	C <sub>24</sub> H <sub>31</sub> ClF <sub>2</sub> N <sub>6</sub> O <sub>2</sub>		
Molecular Weight:	508.99		
Target:	Bcl-2 Family; Molecular Glues		
Pathway:	Apoptosis; PROTAC		
Storage:	Powder	-20°C	3 years
		4°C	2 years
	In solvent	-80°C	6 months
		-20°C	1 month



### SOLVENT & SOLUBILITY

#### In Vitro

DMSO : 300 mg/mL (589.40 mM; Need ultrasonic)

Concentration	Mass		
	1 mg	5 mg	10 mg
1 mM	1.9647 mL	9.8234 mL	19.6468 mL
5 mM	0.3929 mL	1.9647 mL	3.9294 mL
10 mM	0.1965 mL	0.9823 mL	1.9647 mL

Please refer to the solubility information to select the appropriate solvent.

### BIOLOGICAL ACTIVITY

#### Description

CCT369260 (compound 1) is an orally active B-cell lymphoma 6 (BCL6) inhibitor with anti-tumor activity. CCT369260 (compound 1) exhibits an IC<sub>50</sub> of 520 nM<sup>[1]</sup>.

#### IC<sub>50</sub> & Target

IC<sub>50</sub>: 520 nM (BCL6)<sup>[1]</sup>.

#### In Vivo

CCT369260 (compound 1, 15 mg/kg, po, single dose) significantly inhibits BCL6 in OCI-Ly1 DLBCL xenograft model<sup>[1]</sup>. MCE has not independently confirmed the accuracy of these methods. They are for reference only.

Animal Model:	OCI-Ly1 DLBCL xenograft model (female SCID mice) <sup>[1]</sup> .
Dosage:	15 mg/kg.
Administration:	PO, single dose.
Result:	Decreased the levels of BCL6 in the tumor observed up to 10 h after administration.

Animal Model:	Female Balb/C mice <sup>[1]</sup> .
Dosage:	1 mg/kg iv and 5 mg/kg po (Pharmacokinetic Analysis).
Administration:	IV and PO
Result:	Demonstrated moderate clearance (CL 20 mL min <sup>-1</sup> kg <sup>-1</sup> ) with mean oral bioavailability of 54%.

## REFERENCES

[1]. Benjamin R Bellenie, et al. Achieving In Vivo Target Depletion through the Discovery and Optimization of Benzimidazolone BCL6 Degradable. J Med Chem. 2020 Apr 23;63(8):4047-4068.

**Caution: Product has not been fully validated for medical applications. For research use only.**

Tel: 609-228-6898

Fax: 609-228-5909

E-mail: tech@MedChemExpress.com

Address: 1 Deer Park Dr, Suite Q, Monmouth Junction, NJ 08852, USA