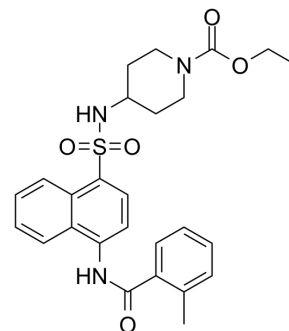


CCR8 antagonist 1

Cat. No.:	HY-144197		
CAS No.:	723304-76-5		
Molecular Formula:	C ₂₆ H ₂₉ N ₃ O ₅ S		
Molecular Weight:	495.59		
Target:	CCR		
Pathway:	GPCR/G Protein; Immunology/Inflammation		
Storage:	Powder	-20°C	3 years
		4°C	2 years
	In solvent	-80°C	6 months
		-20°C	1 month



SOLVENT & SOLUBILITY

In Vitro

DMSO : 25 mg/mL (50.44 mM; Need ultrasonic)

Concentration	Solvent	Mass		
		1 mg	5 mg	10 mg
Preparing Stock Solutions	1 mM	2.0178 mL	10.0890 mL	20.1780 mL
	5 mM	0.4036 mL	2.0178 mL	4.0356 mL
	10 mM	0.2018 mL	1.0089 mL	2.0178 mL

Please refer to the solubility information to select the appropriate solvent.

BIOLOGICAL ACTIVITY

Description

CCR8 antagonist 1 (compound 15) is a potente human CCR8 antagonist with a K_i of 1.6 nM^[1].

IC₅₀ & Target

CCR8
1.6 nM (K_i)

REFERENCES

[1]. Jenkins TJ, et al. Design, synthesis, and evaluation of naphthalene-sulfonamide antagonists of human CCR8. *J Med Chem.* 2007;50(3):566-584.

Caution: Product has not been fully validated for medical applications. For research use only.

Tel: 609-228-6898

Fax: 609-228-5909

E-mail: tech@MedChemExpress.com

Address: 1 Deer Park Dr, Suite Q, Monmouth Junction, NJ 08852, USA