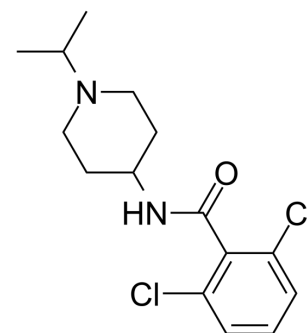


CBS1117

Cat. No.:	HY-131059		
CAS No.:	959245-08-0		
Molecular Formula:	C ₁₅ H ₂₀ Cl ₂ N ₂ O		
Molecular Weight:	315.24		
Target:	Influenza Virus		
Pathway:	Anti-infection		
Storage:	Powder	-20°C	3 years
		4°C	2 years
	In solvent	-80°C	6 months
		-20°C	1 month



SOLVENT & SOLUBILITY

In Vitro

DMSO : 250 mg/mL (793.05 mM; Need ultrasonic)

Concentration	Solvent	Mass		
		1 mg	5 mg	10 mg
Preparing Stock Solutions	1 mM	3.1722 mL	15.8609 mL	31.7219 mL
	5 mM	0.6344 mL	3.1722 mL	6.3444 mL
	10 mM	0.3172 mL	1.5861 mL	3.1722 mL

Please refer to the solubility information to select the appropriate solvent.

In Vivo

- Add each solvent one by one: 10% DMSO >> 40% PEG300 >> 5% Tween-80 >> 45% saline
Solubility: ≥ 2.08 mg/mL (6.60 mM); Clear solution
- Add each solvent one by one: 10% DMSO >> 90% (20% SBE-β-CD in saline)
Solubility: ≥ 2.08 mg/mL (6.60 mM); Clear solution
- Add each solvent one by one: 10% DMSO >> 90% corn oil
Solubility: ≥ 2.08 mg/mL (6.60 mM); Clear solution

BIOLOGICAL ACTIVITY

Description

CBS1117 is a virus entry inhibitor with an IC₅₀ of 70 nM for influenza A virus, A/Puerto Rico/8/34 (H1N1). CBS1117 interferes with the hemagglutinin (HA)-mediated fusion process^[1].

IC₅₀ & Target

IC₅₀: 70 nM (H1N1)^[1]

In Vitro

CBS1117 has a lower IC₅₀ value of 70 nM and higher CC₅₀ value of 274 μM, leading to an excellent antiviral selectivity index value (SI value of 3914) in human lung epithelial cell line (A549)^[1].

MCE has not independently confirmed the accuracy of these methods. They are for reference only.

REFERENCES

[1]. Hussein AFA, et al. Identification of entry inhibitors with 4-aminopiperidine scaffold targeting group 1 influenza A virus. *Antiviral Res.* 2020 May;177:104782.

Caution: Product has not been fully validated for medical applications. For research use only.

Tel: 609-228-6898

Fax: 609-228-5909

E-mail: tech@MedChemExpress.com

Address: 1 Deer Park Dr, Suite Q, Monmouth Junction, NJ 08852, USA