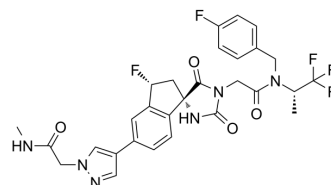


## CBP/p300-IN-5

Cat. No.:	HY-100132
CAS No.:	1889284-33-6
Molecular Formula:	C <sub>29</sub> H <sub>27</sub> F <sub>5</sub> N <sub>6</sub> O <sub>4</sub>
Molecular Weight:	618.55
Target:	Histone Acetyltransferase
Pathway:	Epigenetics
Storage:	Please store the product under the recommended conditions in the Certificate of Analysis.



### BIOLOGICAL ACTIVITY

<b>Description</b>	P300/CBP-IN-5 is a potent p300/CBP histone acetyltransferase inhibitor extracted from patent WO2016044770A1, Example 715, has an IC <sub>50</sub> of 18.8 nM <sup>[1]</sup> .
<b>IC<sub>50</sub> &amp; Target</b>	IC <sub>50</sub> : 18.8 nM (p300/CBP) <sup>[1]</sup>
<b>In Vitro</b>	P300/CBP-IN-5 inhibits p300 LnCap-FGC cells proliferation with an IC <sub>50</sub> of 14.8 nM. P300/CBP-IN-5 inhibits H3K27Ac with an IC <sub>50</sub> value of 4.6 nM in PC-3 cells <sup>[1]</sup> . MCE has not independently confirmed the accuracy of these methods. They are for reference only.
<b>In Vivo</b>	The effect of P300/CBP-IN-5 (Example 715) on tumor growth is evaluated in subcutaneous, SuDHL-8 (B-cell lymphoma) and 22RV1 (prostate) xenograft tumors implanted in SCID female mice. Human cancer cells are inoculated subcutaneously into the right hind flank of female SCID mice on study day 0. Administration of P300/CBP-IN-5 (7.5 mg/kg/day) is initiated at the time of size match. P300/CBP-IN-5 induces significant tumor growth inhibition in multiple xenograft tumor models (the tumor growth inhibition of 62% in SuDHL-8 xenograft tumor model; 48% in 22RV1 xenograft tumor model) <sup>[1]</sup> . MCE has not independently confirmed the accuracy of these methods. They are for reference only.

### REFERENCES

[1]. Michael Michaelides, et al. Spirocyclic hat inhibitors and methods for their use. WO2016044770A1.

**Caution: Product has not been fully validated for medical applications. For research use only.**

Tel: 609-228-6898

Fax: 609-228-5909

E-mail: tech@MedChemExpress.com

Address: 1 Deer Park Dr, Suite Q, Monmouth Junction, NJ 08852, USA