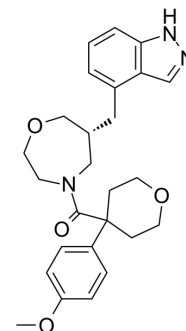


## CBP/p300-IN-16

<b>Cat. No.:</b>	HY-143440
<b>Molecular Formula:</b>	C <sub>26</sub> H <sub>31</sub> N <sub>3</sub> O <sub>4</sub>
<b>Molecular Weight:</b>	449.54
<b>Target:</b>	Histone Acetyltransferase
<b>Pathway:</b>	Epigenetics
<b>Storage:</b>	Please store the product under the recommended conditions in the Certificate of Analysis.



### BIOLOGICAL ACTIVITY

<b>Description</b>	CBP/p300-IN-16 (compound 1) is a potent EP300/CBP HAT inhibitor with IC <sub>50</sub> s of 0.61, 2.24 μM for HAT EP300 and LK2 H3K27, respectively <sup>[1]</sup> .	
<b>IC<sub>50</sub> &amp; Target</b>	EP300 0.61 μM (IC <sub>50</sub> )	LK2 H3K27 2.24 μM (IC <sub>50</sub> )

### REFERENCES

[1]. Kanada R, et al. Discovery of EP300/CBP histone acetyltransferase inhibitors through scaffold hopping of 1,4-oxazepane ring. *Bioorg Med Chem Lett.* 2022 Jun 15;66:128726.

**Caution: Product has not been fully validated for medical applications. For research use only.**

Tel: 609-228-6898

Fax: 609-228-5909

E-mail: tech@MedChemExpress.com

Address: 1 Deer Park Dr, Suite Q, Monmouth Junction, NJ 08852, USA