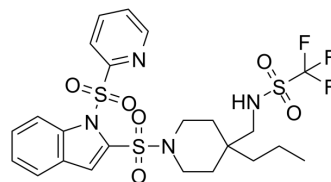


## CB2R-IN-1

Cat. No.:	HY-100328
CAS No.:	1257555-79-5
Molecular Formula:	C <sub>23</sub> H <sub>27</sub> F <sub>3</sub> N <sub>4</sub> O <sub>6</sub> S <sub>3</sub>
Molecular Weight:	608.67
Target:	Cannabinoid Receptor
Pathway:	GPCR/G Protein; Neuronal Signaling
Storage:	Please store the product under the recommended conditions in the Certificate of Analysis.



### BIOLOGICAL ACTIVITY

Description	CB2R-IN-1 is a potent cannabinoid CB <sub>2</sub> receptor inverse agonist with a K <sub>i</sub> of 0.9 nM.
IC <sub>50</sub> & Target	CB2 0.9 nM (K <sub>i</sub> )
In Vitro	CB2R-IN-1 (Compound 37) is a potent cannabinoid CB <sub>2</sub> receptor ligand (K <sub>i</sub> =0.9 nM) with excellent selectivity over the CB <sub>1</sub> receptor (K <sub>i</sub> =8259.3 nM) <sup>[1]</sup> . MCE has not independently confirmed the accuracy of these methods. They are for reference only.

### REFERENCES

[1]. Tong L, et al. Expansion of SAR studies on triaryl bis sulfone cannabinoid CB<sub>2</sub> receptor ligands. *Bioorg Med Chem Lett*. 2010 Nov 15;20(22):6785-9.

**Caution: Product has not been fully validated for medical applications. For research use only.**

Tel: 609-228-6898

Fax: 609-228-5909

E-mail: tech@MedChemExpress.com

Address: 1 Deer Park Dr, Suite Q, Monmouth Junction, NJ 08852, USA