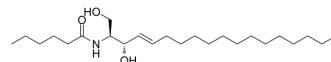


C6 L-threo Ceramide

Cat. No.:	HY-116609
CAS No.:	189894-80-2
Molecular Formula:	C ₂₄ H ₄₇ NO ₃
Molecular Weight:	397.63
Target:	Interleukin Related
Pathway:	Immunology/Inflammation
Storage:	Please store the product under the recommended conditions in the Certificate of Analysis.



BIOLOGICAL ACTIVITY

Description

C6 L-threo Ceramide is a bioactive sphingolipid and cell-permeable analog of naturally occurring ceramides^[1]. C6 L-threo Ceramide significantly inhibits IL-4 production in T cells. Anti-allergic agents^[2].

REFERENCES

- [1]. Jin Park, et al. Inhibitory activity of a ceramide library on interleukin-4 production from activated T cells. *Bioorg Med Chem.* 2005 Apr 1;13(7):2589-95.
- [2]. Jin Park, et al. Inhibitory activity of a ceramide library on interleukin-4 production from activated T cells. *Bioorg Med Chem.* 2005 Apr 1;13(7):2589-95.

Caution: Product has not been fully validated for medical applications. For research use only.

Tel: 609-228-6898

Fax: 609-228-5909

E-mail: tech@MedChemExpress.com

Address: 1 Deer Park Dr, Suite Q, Monmouth Junction, NJ 08852, USA