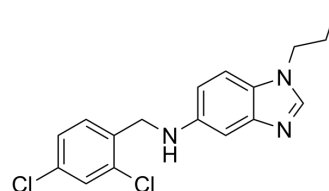


## C215

Cat. No.:	HY-124814
CAS No.:	912780-51-9
Molecular Formula:	C <sub>17</sub> H <sub>17</sub> Cl <sub>2</sub> N <sub>3</sub>
Molecular Weight:	334
Target:	Bacterial
Pathway:	Anti-infection
Storage:	Please store the product under the recommended conditions in the Certificate of Analysis.



### SOLVENT & SOLUBILITY

#### In Vitro

DMSO : 62.5 mg/mL (187.13 mM; Need ultrasonic)

Preparing Stock Solutions	Solvent Concentration	Mass		
		1 mg	5 mg	10 mg
	1 mM	2.9940 mL	14.9701 mL	29.9401 mL
	5 mM	0.5988 mL	2.9940 mL	5.9880 mL
	10 mM	0.2994 mL	1.4970 mL	2.9940 mL

Please refer to the solubility information to select the appropriate solvent.

### BIOLOGICAL ACTIVITY

#### Description

C215 is a potent inhibitor of MmpL3. C215 is identified in HTS with glycerol independent activity against *M. tuberculosis*, limited non-specific toxicity against mammalian cells, an IC<sub>90</sub> of 16 μM against *M. tuberculosis*, and efficacy against *M. tuberculosis* growing in macrophages<sup>[1]</sup>.

### REFERENCES

[1]. Stanley SA, Grant SS, Kawate T, et al. Identification of novel inhibitors of *M. tuberculosis* growth using whole cell based high-throughput screening. *ACS Chem Biol.* 2012;7(8):1377-1384.

**Caution: Product has not been fully validated for medical applications. For research use only.**

Tel: 609-228-6898

Fax: 609-228-5909

E-mail: tech@MedChemExpress.com

Address: 1 Deer Park Dr, Suite Q, Monmouth Junction, NJ 08852, USA