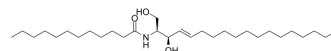


C12-Ceramide

Cat. No.:	HY-100353		
CAS No.:	74713-60-3		
Molecular Formula:	C ₃₀ H ₅₉ NO ₃		
Molecular Weight:	481.79		
Target:	Others		
Pathway:	Others		
Storage:	Powder	-20°C	3 years
	In solvent	-80°C	6 months
		-20°C	1 month



BIOLOGICAL ACTIVITY

Description	C12-Ceramide (N-Lauroyl-D-erythro-sphingosine), a naturally occurring ceramide, is formed by hydrolysis of C12 sphingomyelin. C12-Ceramide can enhance the Doxorubicin toxicity in MDA-MB-231 cells. C12-Ceramide also can be used to diagnose types A and B Niemann-Pick disease ^{[1][1]} .
In Vitro	C12-Ceramide (1 μM; 24-72 h) enhances the liposomal Doxorubicin toxicity in MDA-MB-231 cells ^[1] . MCE has not independently confirmed the accuracy of these methods. They are for reference only.

REFERENCES

[1]. He X, et, al. A fluorescence-based, high-performance liquid chromatographic assay to determine acid sphingomyelinase activity and diagnose types A and B Niemann-Pick disease. *Anal Biochem.* 2003 Mar 1;314(1):116-20.

[2]. Øverbye A, et, al. Ceramide-containing liposomes with doxorubicin: time and cell-dependent effect of C6 and C12 ceramide. *Oncotarget.* 2017 Aug 12;8(44):76921-76934.

Caution: Product has not been fully validated for medical applications. For research use only.

Tel: 609-228-6898

Fax: 609-228-5909

E-mail: tech@MedChemExpress.com

Address: 1 Deer Park Dr, Suite Q, Monmouth Junction, NJ 08852, USA