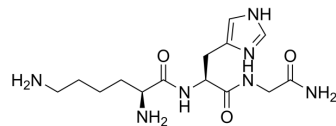


## Bursin

Cat. No.:	HY-125153
CAS No.:	60267-34-7
Molecular Formula:	C <sub>14</sub> H <sub>25</sub> N <sub>7</sub> O <sub>3</sub>
Molecular Weight:	339.39
Target:	Others
Pathway:	Others
Storage:	Please store the product under the recommended conditions in the Certificate of Analysis.



## BIOLOGICAL ACTIVITY

### Description

Bursin is a peptide that can be isolated from the bursa of Fabricius of chicken. Bursin induces the phenotypic differentiation of mammalian and avian B precursor cells. Bursin also increases cyclic guanosine monophosphate in cells of the human B-cell line Daudi<sup>[1]</sup>.

## REFERENCES

[1]. Audhya T, et al. Tripeptide structure of bursin, a selective B-cell-differentiating hormone of the bursa of fabricius. Science. 1986 Feb 28;231(4741):997-9.

**Caution: Product has not been fully validated for medical applications. For research use only.**

Tel: 609-228-6898

Fax: 609-228-5909

E-mail: tech@MedChemExpress.com

Address: 1 Deer Park Dr, Suite Q, Monmouth Junction, NJ 08852, USA