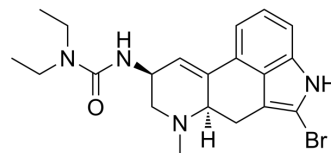


Bromerguride

Cat. No.:	HY-106075
CAS No.:	83455-48-5
Molecular Formula:	C ₂₀ H ₂₅ BrN ₄ O
Molecular Weight:	417.34
Target:	Dopamine Receptor
Pathway:	GPCR/G Protein; Neuronal Signaling
Storage:	Please store the product under the recommended conditions in the Certificate of Analysis.



BIOLOGICAL ACTIVITY

Description

Bromerguride (2-Bromolisuride) is an analogue of the ergot dopamine agonist Lisuride (HY-12713). Bromerguride exhibits central antidopaminergic properties^[1].

REFERENCES

[1]. Wachtel H, et, al. Central antidopaminergic properties of 2-bromolisuride, an analogue of the ergot dopamine agonist lisuride. Life Sci. 1983 Dec 26;33(26):2583-97.

Caution: Product has not been fully validated for medical applications. For research use only.

Tel: 609-228-6898

Fax: 609-228-5909

E-mail: tech@MedChemExpress.com

Address: 1 Deer Park Dr, Suite Q, Monmouth Junction, NJ 08852, USA