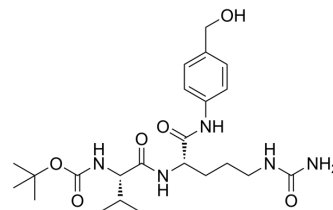


Boc-Val-Cit-PAB

Cat. No.:	HY-141141		
CAS No.:	870487-09-5		
Molecular Formula:	C ₂₃ H ₃₇ N ₅ O ₆		
Molecular Weight:	479.57		
Target:	ADC Linker		
Pathway:	Antibody-drug Conjugate/ADC Related		
Storage:	Powder	-20°C	3 years
		4°C	2 years
	In solvent	-80°C	6 months
		-20°C	1 month



SOLVENT & SOLUBILITY

In Vitro

DMSO : 100 mg/mL (208.52 mM; Need ultrasonic)

Concentration	Mass		
	1 mg	5 mg	10 mg
1 mM	2.0852 mL	10.4260 mL	20.8520 mL
5 mM	0.4170 mL	2.0852 mL	4.1704 mL
10 mM	0.2085 mL	1.0426 mL	2.0852 mL

Please refer to the solubility information to select the appropriate solvent.

BIOLOGICAL ACTIVITY

Description	Boc-Val-Cit-PAB is a cleavable ADC linker used in the synthesis of antibody-drug conjugates (ADCs) ^[1] .	
IC₅₀ & Target	Protease Cleavable Linker	Cleavable Linker
In Vitro	ADCs are comprised of an antibody to which is attached an ADC cytotoxin through an ADC linker ^[1] . MCE has not independently confirmed the accuracy of these methods. They are for reference only.	

REFERENCES

[1]. Beck A, et al. Strategies and challenges for the next generation of antibody-drug conjugates. Nat Rev Drug Discov. 2017 May;16(5):315-337.

Caution: Product has not been fully validated for medical applications. For research use only.

Tel: 609-228-6898

Fax: 609-228-5909

E-mail: tech@MedChemExpress.com

Address: 1 Deer Park Dr, Suite Q, Monmouth Junction, NJ 08852, USA