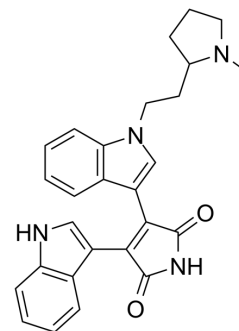


Bisindolylmaleimide II

Cat. No.:	HY-108604
CAS No.:	137592-45-1
Molecular Formula:	C ₂₇ H ₂₆ N ₄ O ₂
Molecular Weight:	438.52
Target:	PKC
Pathway:	Epigenetics; TGF-beta/Smad
Storage:	Please store the product under the recommended conditions in the Certificate of Analysis.



BIOLOGICAL ACTIVITY

Description

Bisindolylmaleimide II is a general inhibitor of all PKC subtypes^[1].

REFERENCES

[1]. Gassel M, et al. The protein kinase C inhibitor bisindolyl maleimide 2 binds with reversed orientations to different conformations of protein kinase A. J Biol Chem. 2004 May 28;279(22):23679-90.

Caution: Product has not been fully validated for medical applications. For research use only.

Tel: 609-228-6898

Fax: 609-228-5909

E-mail: tech@MedChemExpress.com

Address: 1 Deer Park Dr, Suite Q, Monmouth Junction, NJ 08852, USA