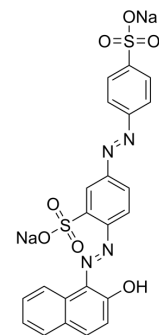


Biebrich scarlet

Cat. No.:	HY-121525
CAS No.:	4196-99-0
Molecular Formula:	C ₂₂ H ₁₄ N ₄ Na ₂ O ₇ S ₂
Molecular Weight:	556.48
Target:	Biochemical Assay Reagents
Pathway:	Others
Storage:	Please store the product under the recommended conditions in the Certificate of Analysis.



BIOLOGICAL ACTIVITY

Description

Biebrich scarlet is an azo organosulfur dyes.

Caution: Product has not been fully validated for medical applications. For research use only.

Tel: 609-228-6898

Fax: 609-228-5909

E-mail: tech@MedChemExpress.com

Address: 1 Deer Park Dr, Suite Q, Monmouth Junction, NJ 08852, USA