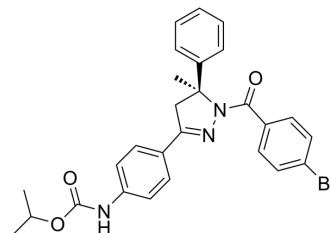


## Beclin1-Bcl-2 interaction inhibitor 1

|                    |   |
|--------------------|---|
| Cat. No.:          | HY-149681   |
| Molecular Formula: | C <sub>27</sub> H <sub>26</sub> BrN <sub>3</sub> O <sub>3</sub>                           |
| Molecular Weight:  | 520.42  |
| Target:            | Bcl-2 Family; Beclin1   |
| Pathway:           | Apoptosis; Autophagy  |
| Storage:           | Please store the product under the recommended conditions in the Certificate of Analysis. |



### BIOLOGICAL ACTIVITY

#### Description

Beclin1-Bcl-2 interaction inhibitor 1 potently inhibits Beclin 1/Bcl-2 binding. Beclin1-Bcl-2 interaction inhibitor 1 can be used for the research of cancer and neurodegeneration<sup>[1]</sup>.

### REFERENCES

[1]. Pan YZ, et al. Structural insights for selective disruption of Beclin 1 binding to Bcl-2. *Commun Biol.* 2023 Oct 24;6(1):1080.

**Caution: Product has not been fully validated for medical applications. For research use only.**

Tel: 609-228-6898

Fax: 609-228-5909

E-mail: tech@MedChemExpress.com

Address: 1 Deer Park Dr, Suite Q, Monmouth Junction, NJ 08852, USA