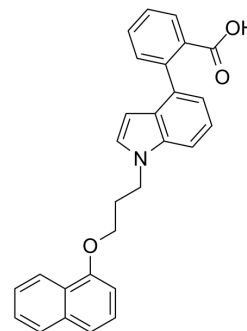


## Bcl-2/Mcl-1-IN-1

Cat. No.:	HY-144430
CAS No.:	2673361-08-3
Molecular Formula:	C <sub>28</sub> H <sub>23</sub> NO <sub>3</sub>
Molecular Weight:	421.49
Target:	Bcl-2 Family
Pathway:	Apoptosis
Storage:	Please store the product under the recommended conditions in the Certificate of Analysis.



### BIOLOGICAL ACTIVITY

<b>Description</b>	Bcl-2/Mcl-1-IN-1 (compound 3) is a Bcl-2/Mcl-1 inhibitor, with K <sub>i</sub> s of 1.19 μM and 4.53 μM for Mcl-1 and Bcl-2, respectively. Bcl-2/Mcl-1-IN-1 can be used for the research of cancer <sup>[1]</sup> .	
<b>IC<sub>50</sub> &amp; Target</b>	Mcl-1 1.19 μM (K <sub>i</sub> )	Bcl-2 4.53 μM (K <sub>i</sub> )

### REFERENCES

[1]. Niu Q, et, al. Design, synthesis and biological evaluation of dual Bcl-2/Mcl-1 inhibitors bearing 2-(1H-indol-4-yl)benzoic acid scaffold. *Bioorg Med Chem Lett.* 2021 Sep 1;47:128215.

**Caution: Product has not been fully validated for medical applications. For research use only.**

Tel: 609-228-6898

Fax: 609-228-5909

E-mail: tech@MedChemExpress.com

Address: 1 Deer Park Dr, Suite Q, Monmouth Junction, NJ 08852, USA