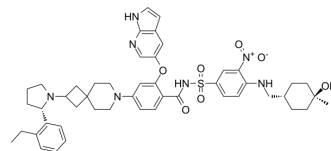


## Bcl-2-IN-2

Cat. No.:	HY-131247
CAS No.:	2383085-86-5
Molecular Formula:	C <sub>48</sub> H <sub>57</sub> N <sub>7</sub> O <sub>7</sub> S
Molecular Weight:	876.07
Target:	Bcl-2 Family
Pathway:	Apoptosis
Storage:	Please store the product under the recommended conditions in the Certificate of Analysis.



### BIOLOGICAL ACTIVITY

<b>Description</b>	Bcl-2-IN-2 is a potent and selective Bcl-2 inhibitor with an IC <sub>50</sub> of 0.034 nM and also inhibits Bcl-xL with an IC <sub>50</sub> of 43 nM, showing >1000-fold selectivity for Bcl-2 over Bcl-xL <sup>[1]</sup> .	
<b>IC<sub>50</sub> &amp; Target</b>	Bcl-2 0.034 nM (IC <sub>50</sub> )	Bcl-xL 43 nM (IC <sub>50</sub> )
<b>In Vitro</b>	Bcl-2-IN-2 inhibits mutant Bcl-2-G101V with an IC <sub>50</sub> of 1.2 nM. Bcl-2-IN-2 inhibits RS4;11 cellular proliferation with an IC <sub>50</sub> of 1.9 nM <sup>[1]</sup> . MCE has not independently confirmed the accuracy of these methods. They are for reference only.	

### REFERENCES

[1]. Yunhang GUO, et al. Bcl-2 INHIBITORS. WO2019210828A1.

**Caution: Product has not been fully validated for medical applications. For research use only.**

Tel: 609-228-6898

Fax: 609-228-5909

E-mail: tech@MedChemExpress.com

Address: 1 Deer Park Dr, Suite Q, Monmouth Junction, NJ 08852, USA