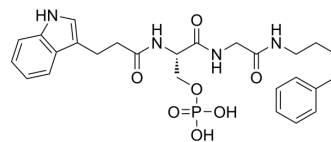


BRCA1-IN-2

| | | | |
|--------------------|---|-------|---------|
| Cat. No.: | HY-100862 | | |
| CAS No.: | 1622262-55-8 | | |
| Molecular Formula: | C ₂₆ H ₃₃ N ₄ O ₇ P | | |
| Molecular Weight: | 545 | | |
| Target: | PARP | | |
| Pathway: | Cell Cycle/DNA Damage; Epigenetics | | |
| Storage: | Powder | -20°C | 3 years |
| | | 4°C | 2 years |
| | In solvent | -80°C | 2 years |
| | | -20°C | 1 year |



SOLVENT & SOLUBILITY

| | | | | | |
|---|--|--------------------------|--------------|-----------|------------|
| In Vitro | DMSO : 100 mg/mL (183.49 mM; Need ultrasonic) | | | | |
| | | Solvent Concentration | Mass 1 mg | 5 mg | 10 mg |
| | Preparing Stock Solutions | 1 mM | 1.8349 mL | 9.1743 mL | 18.3486 mL |
| | | 5 mM | 0.3670 mL | 1.8349 mL | 3.6697 mL |
| 10 mM | | 0.1835 mL | 0.9174 mL | 1.8349 mL | |
| Please refer to the solubility information to select the appropriate solvent. | | | | | |
| In Vivo | <ol style="list-style-type: none"> Add each solvent one by one: 10% DMSO >> 40% PEG300 >> 5% Tween-80 >> 45% saline Solubility: ≥ 2.5 mg/mL (4.59 mM); Clear solution Add each solvent one by one: 10% DMSO >> 90% (20% SBE-β-CD in saline) Solubility: ≥ 2.5 mg/mL (4.59 mM); Clear solution Add each solvent one by one: 10% DMSO >> 90% corn oil Solubility: ≥ 2.5 mg/mL (4.59 mM); Clear solution | | | | |

BIOLOGICAL ACTIVITY

| | |
|---------------------------|--|
| Description | BRCA1-IN-2 (compound 15) is a cell-permeable protein-protein interaction (PPI) inhibitor for BRCA1 with an IC ₅₀ of 0.31 μM and a K _d of 0.3 μM, which shows antitumor activities via the disruption of BRCA1 (BRCT) ₂ /protein interactions ^[1] . |
| IC ₅₀ & Target | IC ₅₀ : 0.31 μM (BRCA1) ^[1] K _d : 0.3 μM (BRCA1) ^[1] |

CUSTOMER VALIDATION

- Chin J Nat Med. 2020 Mar;18(3):178-185.

See more customer validations on www.MedChemExpress.com

REFERENCES

- [1]. Na Z, et al. Protein-Protein Interaction Inhibitors of BRCA1 Discovered Using Small Molecule Microarrays. Methods Mol Biol. 2017;1518:139-156.
-

Caution: Product has not been fully validated for medical applications. For research use only.

Tel: 609-228-6898

Fax: 609-228-5909

E-mail: tech@MedChemExpress.com

Address: 1 Deer Park Dr, Suite Q, Monmouth Junction, NJ 08852, USA