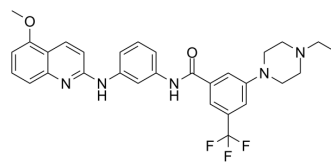


BRAF V600E/CRAF-IN-2

Cat. No.:	HY-146443
CAS No.:	2499499-62-4
Molecular Formula:	C ₃₀ H ₃₀ F ₃ N ₅ O ₂
Molecular Weight:	549.59
Target:	Raf
Pathway:	MAPK/ERK Pathway
Storage:	Please store the product under the recommended conditions in the Certificate of Analysis.



BIOLOGICAL ACTIVITY

Description

BRAF V600E/CRAF-IN-2 (Compound 9c) is a potent inhibitor of BRAF^{V600E}/CRAF with IC₅₀s of 0.888 and 0.229 μM, respectively. BRAF V600E/CRAF-IN-2 triggers apoptosis and cell cycle arrest at G₀/G₁ phase in HCT-116 colon cancer cell. BRAF V600E/CRAF-IN-2 has the potential for the research of cancer diseases^[1].

REFERENCES

[1]. El-Damasy AK, et al. 2-Anilinoquinoline based arylamides as broad spectrum anticancer agents with B-RAFV600E/C-RAF kinase inhibitory effects: Design, synthesis, in vitro cell-based and oncogenic kinase assessments. *Eur J Med Chem.* 2020 Dec 15;208:112756.

Caution: Product has not been fully validated for medical applications. For research use only.

Tel: 609-228-6898

Fax: 609-228-5909

E-mail: tech@MedChemExpress.com

Address: 1 Deer Park Dr, Suite Q, Monmouth Junction, NJ 08852, USA