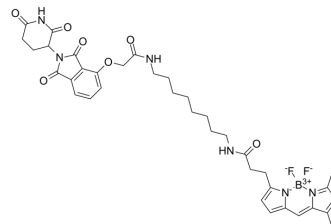


BODIPY FL thalidomide

Cat. No.:	HY-152231		
CAS No.:	2740620-18-0		
Molecular Formula:	C ₃₇ H ₄₃ BF ₂ N ₆ O ₇		
Molecular Weight:	732.58		
Target:	Ligands for E3 Ligase		
Pathway:	PROTAC		
Storage:	Powder	-20°C	3 years
		4°C	2 years
	In solvent	-80°C	6 months
		-20°C	1 month



SOLVENT & SOLUBILITY

In Vitro

DMSO : 100 mg/mL (136.50 mM; Need ultrasonic)

Concentration	Mass		
	1 mg	5 mg	10 mg
1 mM	1.3650 mL	6.8252 mL	13.6504 mL
5 mM	0.2730 mL	1.3650 mL	2.7301 mL
10 mM	0.1365 mL	0.6825 mL	1.3650 mL

Please refer to the solubility information to select the appropriate solvent.

BIOLOGICAL ACTIVITY

Description

BODIPY FL thalidomide is a high-affinity fluorescent probe for the human cereblon protein with a K_D value of 3.6 nM^[1]

REFERENCES

[1]. Lin W, et al. Development of BODIPY FL Thalidomide As a High-Affinity Fluorescent Probe for Cereblon in a Time-Resolved Fluorescence Resonance Energy Transfer Assay. *Bioconjug Chem.* 2020 Nov 18;31(11):2564-2575.

Caution: Product has not been fully validated for medical applications. For research use only.

Tel: 609-228-6898

Fax: 609-228-5909

E-mail: tech@MedChemExpress.com

Address: 1 Deer Park Dr, Suite Q, Monmouth Junction, NJ 08852, USA