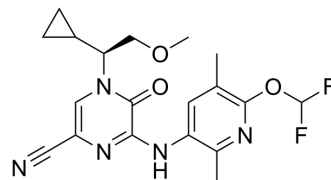


BMS-764459

Cat. No.:	HY-14225
CAS No.:	1188407-45-5
Molecular Formula:	C ₁₉ H ₂₁ F ₂ N ₅ O ₃
Molecular Weight:	405.4
Target:	CRFR; Cytochrome P450
Pathway:	GPCR/G Protein; Metabolic Enzyme/Protease
Storage:	Please store the product under the recommended conditions in the Certificate of Analysis.



BIOLOGICAL ACTIVITY

Description	BMS-764459 is a CRF1 antagonist. BMS-764459 can be used for the research of neurological disorders such as depression and anxiety. BMS-764459 is also an atypical CYP1A1 inducer ^{[1][2]} .
IC ₅₀ & Target	CRF1 ^[1] , CYP1A1 ^[2]

REFERENCES

[1]. David K. Leahy, et al. Development of an Efficient Synthesis of Two CRF Antagonists for the Treatment of Neurological Disorders. *Org. Process Res. Dev.* 2010, 14, 5, 1221-1228.

[2]. Simic D, et al. MicroRNA changes associated with atypical CYP1A1 inducer BMS-764459. *Toxicology.* 2013 Sep 15;311(3):169-77.

Caution: Product has not been fully validated for medical applications. For research use only.

Tel: 609-228-6898

Fax: 609-228-5909

E-mail: tech@MedChemExpress.com

Address: 1 Deer Park Dr, Suite Q, Monmouth Junction, NJ 08852, USA