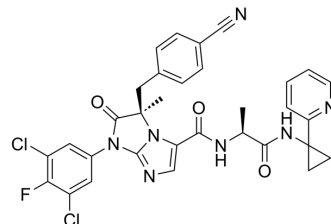


## BI-1950

Cat. No.:	HY-124040
CAS No.:	1159724-42-1
Molecular Formula:	C <sub>32</sub> H <sub>26</sub> Cl <sub>2</sub> FN <sub>7</sub> O <sub>3</sub>
Molecular Weight:	646.5
Target:	Integrin
Pathway:	Cytoskeleton
Storage:	Please store the product under the recommended conditions in the Certificate of Analysis.



## BIOLOGICAL ACTIVITY

Description	BI-1950 is a highly potent lymphocyte function associated antigen-1 (LFA-1) inhibitor. LFA-1 is an essential component in normal immune system function and a target for agent discovery <sup>[1]</sup> .
IC <sub>50</sub> & Target	LFA-1 <sup>[1]</sup>

## REFERENCES

[1]. Latli, B., et al. Synthesis of highly potent Lymphocyte Function-Associated Antigen-1 Antagonists Labeled with Carbon-14 and with Stable Isotopes, Part 3. Journal of Labelled Compounds and Radiopharmaceuticals.

**Caution: Product has not been fully validated for medical applications. For research use only.**

Tel: 609-228-6898

Fax: 609-228-5909

E-mail: tech@MedChemExpress.com

Address: 1 Deer Park Dr, Suite Q, Monmouth Junction, NJ 08852, USA