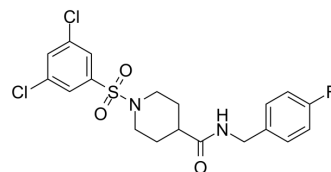


BI 01383298

Cat. No.:	HY-124738
CAS No.:	2227549-00-8
Molecular Formula:	C ₁₉ H ₁₉ Cl ₂ FN ₂ O ₃ S
Molecular Weight:	445.34
Target:	Sodium Channel
Pathway:	Membrane Transporter/Ion Channel
Storage:	-20°C, protect from light * In solvent : -80°C, 6 months; -20°C, 1 month (protect from light)



SOLVENT & SOLUBILITY

In Vitro

DMSO : 37.5 mg/mL (84.21 mM; Need ultrasonic)

Concentration	Solvent	Mass		
		1 mg	5 mg	10 mg
Preparing Stock Solutions	1 mM	2.2455 mL	11.2274 mL	22.4548 mL
	5 mM	0.4491 mL	2.2455 mL	4.4910 mL
	10 mM	0.2245 mL	1.1227 mL	2.2455 mL

Please refer to the solubility information to select the appropriate solvent.

BIOLOGICAL ACTIVITY

Description	BI 01383298 is a potent inhibitor of the sodium-citrate co-transporter (SLC13A5) that is highly expressed in the liver ^[1] .
IC ₅₀ & Target	SLC13A5 ^[1]

REFERENCES

[1]. BI01383298 A chemical probe for SLC13A5.

Caution: Product has not been fully validated for medical applications. For research use only.

Tel: 609-228-6898

Fax: 609-228-5909

E-mail: tech@MedChemExpress.com

Address: 1 Deer Park Dr, Suite Q, Monmouth Junction, NJ 08852, USA