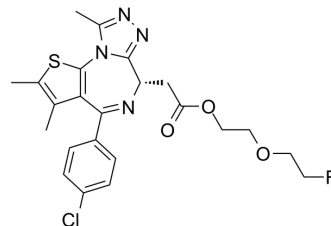


## BET-IN-1

|                    |   |
|--------------------|---|
| Cat. No.:          | HY-115727   |
| CAS No.:           | 2727161-43-3  |
| Molecular Formula: | C <sub>23</sub> H <sub>24</sub> ClFN <sub>4</sub> O <sub>3</sub> S                        |
| Molecular Weight:  | 490.98  |
| Target:            | Epigenetic Reader Domain  |
| Pathway:           | Epigenetics   |
| Storage:           | Please store the product under the recommended conditions in the Certificate of Analysis. |



## BIOLOGICAL ACTIVITY

### Description

BET-IN-1 is a potent BET inhibitor that has excellent brain penetration and reasonable metabolic stability.

## REFERENCES

[1]. Bai P, et al. Design, Synthesis, and Evaluation of Thienodiazepine Derivatives as Positron Emission Tomography Imaging Probes for Bromodomain and Extra-Terminal Domain Family Proteins. *J Med Chem.* 2021 Oct 14;64(19):14745-14756.

**Caution: Product has not been fully validated for medical applications. For research use only.**

Tel: 609-228-6898

Fax: 609-228-5909

E-mail: tech@MedChemExpress.com

Address: 1 Deer Park Dr, Suite Q, Monmouth Junction, NJ 08852, USA