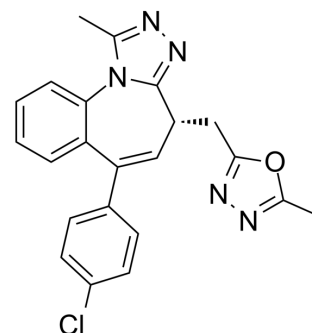


BET-BAY 002

Cat. No.:	HY-12421		
CAS No.:	1588521-78-1		
Molecular Formula:	C ₂₂ H ₁₈ ClN ₅ O		
Molecular Weight:	403.86		
Target:	Epigenetic Reader Domain		
Pathway:	Epigenetics		
Storage:	Powder	-20°C	3 years
		4°C	2 years
	In solvent	-80°C	2 years
		-20°C	1 year



SOLVENT & SOLUBILITY

In Vitro

DMSO : ≥ 50 mg/mL (123.81 mM)
 * "≥" means soluble, but saturation unknown.

Preparing Stock Solutions	Solvent Concentration	Mass		
		1 mg	5 mg	10 mg
	1 mM	2.4761 mL	12.3805 mL	24.7611 mL
	5 mM	0.4952 mL	2.4761 mL	4.9522 mL
	10 mM	0.2476 mL	1.2381 mL	2.4761 mL

Please refer to the solubility information to select the appropriate solvent.

In Vivo

- Add each solvent one by one: 10% DMSO >> 40% PEG300 >> 5% Tween-80 >> 45% saline
Solubility: ≥ 2.5 mg/mL (6.19 mM); Clear solution
- Add each solvent one by one: 10% DMSO >> 90% (20% SBE-β-CD in saline)
Solubility: ≥ 2.5 mg/mL (6.19 mM); Clear solution
- Add each solvent one by one: 10% DMSO >> 90% corn oil
Solubility: ≥ 2.5 mg/mL (6.19 mM); Clear solution

BIOLOGICAL ACTIVITY

Description

BET-BAY 002 is a potent BET inhibitor; shows efficacy in a multiple myeloma model.

REFERENCES

[1]. Evans DM, et al. Exposure time versus cytotoxicity for anticancer agents. *Cancer Chemother Pharmacol.* 2019 Aug;84(2):359-371.

Caution: Product has not been fully validated for medical applications. For research use only.

Tel: 609-228-6898

Fax: 609-228-5909

E-mail: tech@MedChemExpress.com

Address: 1 Deer Park Dr, Suite Q, Monmouth Junction, NJ 08852, USA