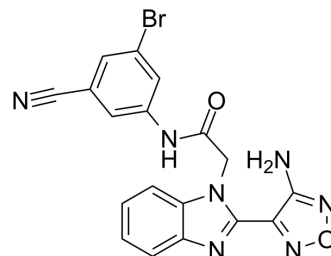


## BChE-IN-8

Cat. No.:	HY-147859
CAS No.:	2653349-78-9
Molecular Formula:	C <sub>18</sub> H <sub>12</sub> BrN <sub>7</sub> O <sub>2</sub>
Molecular Weight:	438.24
Target:	Amyloid-β
Pathway:	Neuronal Signaling
Storage:	Please store the product under the recommended conditions in the Certificate of Analysis.



### BIOLOGICAL ACTIVITY

<b>Description</b>	BChE-IN-8 (compound 20) is an orally active, potent and BBB-penetrated BChE (butyrylcholinesterase) inhibitor, with IC <sub>50</sub> values of 0.15 nM (eqBChE, equine serum BChE) and 45.2 nM (hBChE), respectively. High stability of BChE-IN-8 contributes to significantly improved blood concentration and tissue exposure. BChE-IN-8 can exert neuro-protecting and cognition improving properties through multiple modulations, including cholinergic system, Aβ aggregation, neuropeptide levels. BChE-IN-8 can be used for Alzheimer's disease (AD) research <sup>[1]</sup> .
<b>IC<sub>50</sub> &amp; Target</b>	IC <sub>50</sub> : 0.15 ± 0.10 nM (eqBChE), 45.2 ± 45.0 nM (hBChE) <sup>[1]</sup>

### REFERENCES

[1]. Li Q, Xiong B, Wang Y, Lyu W, Xing S, Chen Y, Liao Q, He S, Feng F, Liu W, Chen Y, Sun H. A highly effective and stable butyrylcholinesterase inhibitor with multi-faceted neuroprotection and cognition improvement. *Eur J Med Chem.* 2022 Jun 7;239:114510.

**Caution: Product has not been fully validated for medical applications. For research use only.**

Tel: 609-228-6898

Fax: 609-228-5909

E-mail: tech@MedChemExpress.com

Address: 1 Deer Park Dr, Suite Q, Monmouth Junction, NJ 08852, USA