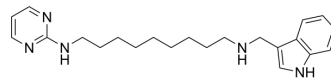


BChE-IN-2

Cat. No.:	HY-139974
Molecular Formula:	C ₂₂ H ₃₁ N ₅
Molecular Weight:	365.52
Target:	Cholinesterase (ChE)
Pathway:	Neuronal Signaling
Storage:	Please store the product under the recommended conditions in the Certificate of Analysis.



BIOLOGICAL ACTIVITY

Description

BChE-IN-2 (compound 22) is a potent inhibitor of BChE with a K_i of 0.099 μM . BChE-IN-2 is a pyrimidine and pyridine derivative. BChE-IN-2 has the potential for the research of Alzheimer's disease (AD) [1].

REFERENCES

[1]. Bortolami M, et al. New Pyrimidine and Pyridine Derivatives as Multitarget Cholinesterase Inhibitors: Design, Synthesis, and In Vitro and In Cellulo Evaluation. ACS Chem Neurosci. 2021;12(21):4090-4112.

Caution: Product has not been fully validated for medical applications. For research use only.

Tel: 609-228-6898

Fax: 609-228-5909

E-mail: tech@MedChemExpress.com

Address: 1 Deer Park Dr, Suite Q, Monmouth Junction, NJ 08852, USA