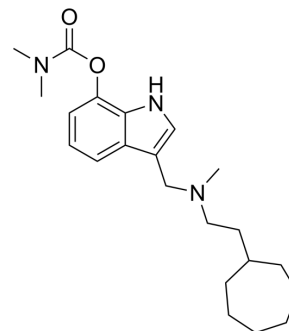


## BChE-IN-15

Cat. No.:	HY-152232
Molecular Formula:	C <sub>22</sub> H <sub>33</sub> N <sub>3</sub> O <sub>2</sub>
Molecular Weight:	371.52
Target:	Cholinesterase (ChE)
Pathway:	Neuronal Signaling
Storage:	Please store the product under the recommended conditions in the Certificate of Analysis.



### BIOLOGICAL ACTIVITY

<b>Description</b>	BChE-IN-15 (Compound 6) is a pseudo-irreversible and covalent BChE inhibitor with an IC <sub>50</sub> of 1.76 nM against hBChE [1].									
<b>IC<sub>50</sub> &amp; Target</b>	hBChE 1.76 nM (IC <sub>50</sub> )	hAChE 558.6 nM (IC <sub>50</sub> )								
<b>In Vitro</b>	<p>BChE-IN-15 (Compound 6) (0.5-50 μM; 48 h) shows cytotoxicity against SH-SY5Y and HepG2 cells<sup>[1]</sup>. MCE has not independently confirmed the accuracy of these methods. They are for reference only. Cell Cytotoxicity Assay<sup>[1]</sup></p> <table border="1"> <tr> <td>Cell Line:</td> <td>SH-SY5Y and HepG2 cell lines</td> </tr> <tr> <td>Concentration:</td> <td>0.5-50 μM</td> </tr> <tr> <td>Incubation Time:</td> <td>48 h</td> </tr> <tr> <td>Result:</td> <td>Showed cytotoxicity with IC<sub>50</sub>s of 5.8 μM and 7.1 μM against SH-SY5Y and HepG2 cells, respectively.</td> </tr> </table>		Cell Line:	SH-SY5Y and HepG2 cell lines	Concentration:	0.5-50 μM	Incubation Time:	48 h	Result:	Showed cytotoxicity with IC <sub>50</sub> s of 5.8 μM and 7.1 μM against SH-SY5Y and HepG2 cells, respectively.
Cell Line:	SH-SY5Y and HepG2 cell lines									
Concentration:	0.5-50 μM									
Incubation Time:	48 h									
Result:	Showed cytotoxicity with IC <sub>50</sub> s of 5.8 μM and 7.1 μM against SH-SY5Y and HepG2 cells, respectively.									

### REFERENCES

[1]. Meden A, et al. Pseudo-irreversible butyrylcholinesterase inhibitors: Structure-activity relationships, computational and crystallographic study of the N-dialkyl O-arylcarbamate warhead. Eur J Med Chem. 2022 Dec 24;247:115048.

**Caution: Product has not been fully validated for medical applications. For research use only.**

Tel: 609-228-6898

Fax: 609-228-5909

E-mail: tech@MedChemExpress.com

Address: 1 Deer Park Dr, Suite Q, Monmouth Junction, NJ 08852, USA