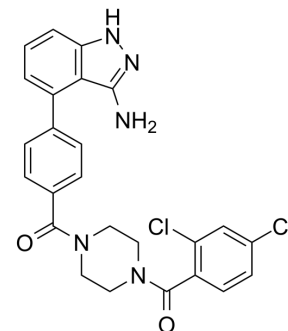


BCR-ABL-IN-5

Cat. No.:	HY-150566
CAS No.:	1795736-60-5
Molecular Formula:	C ₂₅ H ₂₁ Cl ₂ N ₅ O ₂
Molecular Weight:	494.37
Target:	Bcr-Abl
Pathway:	Protein Tyrosine Kinase/RTK
Storage:	Please store the product under the recommended conditions in the Certificate of Analysis.



BIOLOGICAL ACTIVITY

Description	BCR-ABL-IN-5 (compound II) is a Bcr-Abl kinase (Breakpoint cluster region-Abelson) inhibitor. BCR-ABL-IN-5 inhibits Bcr-Abl WT and Bcr-Abl ^{T3151} with the IC ₅₀ value of 0.014 μM and 0.45 μM, respectively. BCR-ABL-IN-5 has some anti-proliferative activity against leukemic cells ^[1] .								
IC₅₀ & Target	IC ₅₀ : 6.5 μM (K562) ^[1] .								
In Vitro	<p>BCR-ABL-IN-5 (compound II) (0-100 μM, 72 hours) can inhibit the proliferation of K562 human leukemia cells^[1]. MCE has not independently confirmed the accuracy of these methods. They are for reference only.</p> <p>Cell Proliferation Assay^[1]</p> <table border="1"> <tr> <td>Cell Line:</td> <td>K562 human leukemia cell line</td> </tr> <tr> <td>Concentration:</td> <td>0-100 μM</td> </tr> <tr> <td>Incubation Time:</td> <td>72 hours</td> </tr> <tr> <td>Result:</td> <td>Inhibited K562 proliferation with an IC₅₀ value of 6.5 μM.</td> </tr> </table>	Cell Line:	K562 human leukemia cell line	Concentration:	0-100 μM	Incubation Time:	72 hours	Result:	Inhibited K562 proliferation with an IC ₅₀ value of 6.5 μM.
Cell Line:	K562 human leukemia cell line								
Concentration:	0-100 μM								
Incubation Time:	72 hours								
Result:	Inhibited K562 proliferation with an IC ₅₀ value of 6.5 μM.								

REFERENCES

[1]. Ashraf K El-Damasy, et al. Design, synthesis, and biological evaluations of novel 3-amino-4-ethynyl indazole derivatives as Bcr-Abl kinase inhibitors with potent cellular antileukemic activity. *Eur J Med Chem.* 2020 Dec 1;207:112710.

Caution: Product has not been fully validated for medical applications. For research use only.

Tel: 609-228-6898

Fax: 609-228-5909

E-mail: tech@MedChemExpress.com

Address: 1 Deer Park Dr, Suite Q, Monmouth Junction, NJ 08852, USA