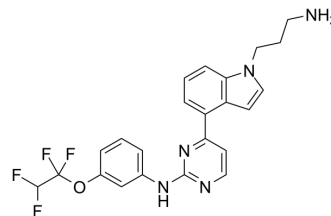


BCR-ABL-IN-1

Cat. No.:	HY-100314
CAS No.:	188260-50-6
Molecular Formula:	C ₂₃ H ₂₁ F ₄ N ₅ O
Molecular Weight:	459.44
Target:	Bcr-Abl
Pathway:	Protein Tyrosine Kinase/RTK
Storage:	Please store the product under the recommended conditions in the Certificate of Analysis.



BIOLOGICAL ACTIVITY

Description	BCR-ABL-IN-1 is an inhibitor of BCR-ABL tyrosine kinase, with a pIC ₅₀ of 6.46, and may be used in the research of chronic myelogenous leukemia.
IC₅₀ & Target	pIC ₅₀ : 6.46 (BCR-ABL) ^[1]
In Vitro	BCR-ABL-IN-1 (Compound 21) is an inhibitor of BCR-ABL tyrosine kinase, with a pIC ₅₀ of 6.46, and may be used in the research of chronic myelogenous leukemia. MCE has not independently confirmed the accuracy of these methods. They are for reference only.

REFERENCES

[1]. Cui J1, et al. BCR-ABL tyrosine kinase inhibitor pharmacophore model derived from a series of phenylaminopyrimidine-based (PAP) derivatives. *Bioorg Med Chem Lett*. 2013 Apr 15;23(8):2442-50.

Caution: Product has not been fully validated for medical applications. For research use only.

Tel: 609-228-6898

Fax: 609-228-5909

E-mail: tech@MedChemExpress.com

Address: 1 Deer Park Dr, Suite Q, Monmouth Junction, NJ 08852, USA