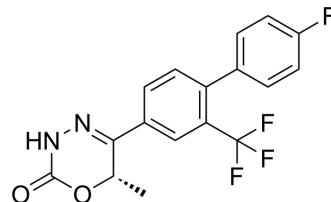


BAY 266605

Cat. No.:	HY-145924	
CAS No.:	2275774-60-0	
Molecular Formula:	C ₁₇ H ₁₂ F ₄ N ₂ O ₂	
Molecular Weight:	352.28	
Target:	Phosphodiesterase (PDE)	
Pathway:	Metabolic Enzyme/Protease	
Storage:	Powder	-20°C 3 years
	In solvent	-80°C 6 months
		-20°C 1 month



SOLVENT & SOLUBILITY

In Vitro

DMSO : 250 mg/mL (709.66 mM; Need ultrasonic)

Concentration	Mass		
	1 mg	5 mg	10 mg
1 mM	2.8387 mL	14.1933 mL	28.3865 mL
5 mM	0.5677 mL	2.8387 mL	5.6773 mL
10 mM	0.2839 mL	1.4193 mL	2.8387 mL

Please refer to the solubility information to select the appropriate solvent.

BIOLOGICAL ACTIVITY

Description

BAY 266605 is an orally active PDE3A and PDE3B inhibitor with IC₅₀s of 87 nM and 50 nM, respectively. BAY 266605 is a PDE3A-SLFN12 complex inducer (WO2019025562A1; example 135)^[1].

IC₅₀ & Target

PDE3A 87 nM (IC ₅₀)	PDE3B 50 nM (IC ₅₀)
------------------------------------	------------------------------------

In Vitro

BAY 266605 (example 135) has anticancer effects, potently inhibit brain cancer (especially glioma, more specifically glioblastoma, astrocytoma), breast cancer (especially ductal carcinoma and adenocarcinoma), cervical cancer, AML (especially erythroleukemia), lung cancer (especially NSCLC adenocarcinoma and SCLC), skin cancer (especially melanoma), oesophagus cancer (especially squamous cell carcinoma), ovarian cancer, (especially teratocarcinoma, adenocarcinoma), pancreas cancer and prostatic cancer^[1].

MCE has not independently confirmed the accuracy of these methods. They are for reference only.

In Vivo

BAY 266605 (5 mg/kg; p.o; twice daily) treatment shows anti-tumor efficacy in murine xenotransplantation models of human cancer^[1].

MCE has not independently confirmed the accuracy of these methods. They are for reference only.

REFERENCES

[1]. Manuel ELLERMANN, et al. Dihydrooxadiazinones. WO2019025562A1.

Caution: Product has not been fully validated for medical applications. For research use only.

Tel: 609-228-6898

Fax: 609-228-5909

E-mail: tech@MedChemExpress.com

Address: 1 Deer Park Dr, Suite Q, Monmouth Junction, NJ 08852, USA