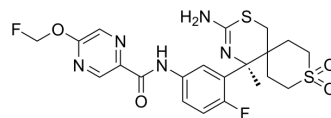


## BACE1-IN-4

Cat. No.:	HY-128594
CAS No.:	2361157-92-6
Molecular Formula:	C <sub>21</sub> H <sub>23</sub> F <sub>2</sub> N <sub>5</sub> O <sub>4</sub> S <sub>2</sub>
Molecular Weight:	511.57
Target:	Beta-secretase
Pathway:	Neuronal Signaling
Storage:	Please store the product under the recommended conditions in the Certificate of Analysis.



### BIOLOGICAL ACTIVITY

<b>Description</b>	BACE1-IN-4 is a potent and highly selective BACE1 inhibitor, with an IC <sub>50</sub> of 3.8 nM and a K <sub>i</sub> of 1.9 nM, more selective at BACE1 over BACE2. Anti-Alzheimer's disease <sup>[1]</sup> .
<b>IC<sub>50</sub> &amp; Target</b>	BACE1
<b>In Vitro</b>	BACE1-IN-4 (Compound 22) is a potent and highly selective BACE1 inhibitor, with an IC <sub>50</sub> of 3.8 nM and a K <sub>i</sub> of 1.9 nM, more selective at BACE1 over BACE2 (IC <sub>50</sub> , 2090 nM; K <sub>i</sub> , 1740 nM) <sup>[1]</sup> . MCE has not independently confirmed the accuracy of these methods. They are for reference only.

### REFERENCES

[1]. Fujimoto K, et al. Structure-Based Design of Selective β-Site Amyloid Precursor Protein Cleaving Enzyme 1 (BACE1) Inhibitors: Targeting the Flap to Gain Selectivity over BACE2. *J Med Chem.* 2019 May 23;62(10):5080-5095.

**Caution: Product has not been fully validated for medical applications. For research use only.**

Tel: 609-228-6898

Fax: 609-228-5909

E-mail: tech@MedChemExpress.com

Address: 1 Deer Park Dr, Suite Q, Monmouth Junction, NJ 08852, USA