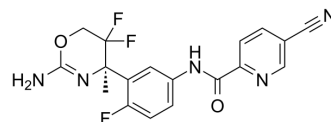


## BACE1-IN-1

<b>Cat. No.:</b>	HY-100182	
<b>CAS No.:</b>	1310347-50-2	
<b>Molecular Formula:</b>	C <sub>18</sub> H <sub>14</sub> F <sub>3</sub> N <sub>5</sub> O <sub>2</sub>	
<b>Molecular Weight:</b>	389.33	
<b>Target:</b>	Beta-secretase	
<b>Pathway:</b>	Neuronal Signaling	
<b>Storage:</b>	Powder	-20°C 3 years 4°C 2 years
	In solvent	-80°C 6 months -20°C 1 month



## SOLVENT & SOLUBILITY

### In Vitro

DMSO : 85 mg/mL (218.32 mM; Need ultrasonic)

Concentration	Solvent	Mass		
		1 mg	5 mg	10 mg
Preparing Stock Solutions	1 mM	2.5685 mL	12.8426 mL	25.6852 mL
	5 mM	0.5137 mL	2.5685 mL	5.1370 mL
	10 mM	0.2569 mL	1.2843 mL	2.5685 mL

Please refer to the solubility information to select the appropriate solvent.

## BIOLOGICAL ACTIVITY

### Description

BACE1-IN-1 is a potent and highly brain penetrant BACE1 inhibitor with IC<sub>50</sub>s of 32 and 47 nM for human BACE1 and BACE2, respectively.

### IC<sub>50</sub> & Target

IC<sub>50</sub>: 32 nM (human BACE1), 47 nM (human BACE2)<sup>[1]</sup>

## REFERENCES

[1]. Hilpert H, et al.  $\beta$ -Secretase (BACE1) inhibitors with high in vivo efficacy suitable for clinical evaluation in Alzheimer's disease. J Med Chem. 2013 May 23;56(10):3980-95.

---

**Caution: Product has not been fully validated for medical applications. For research use only.**

Tel: 609-228-6898

Fax: 609-228-5909

E-mail: [tech@MedChemExpress.com](mailto:tech@MedChemExpress.com)

Address: 1 Deer Park Dr, Suite Q, Monmouth Junction, NJ 08852, USA